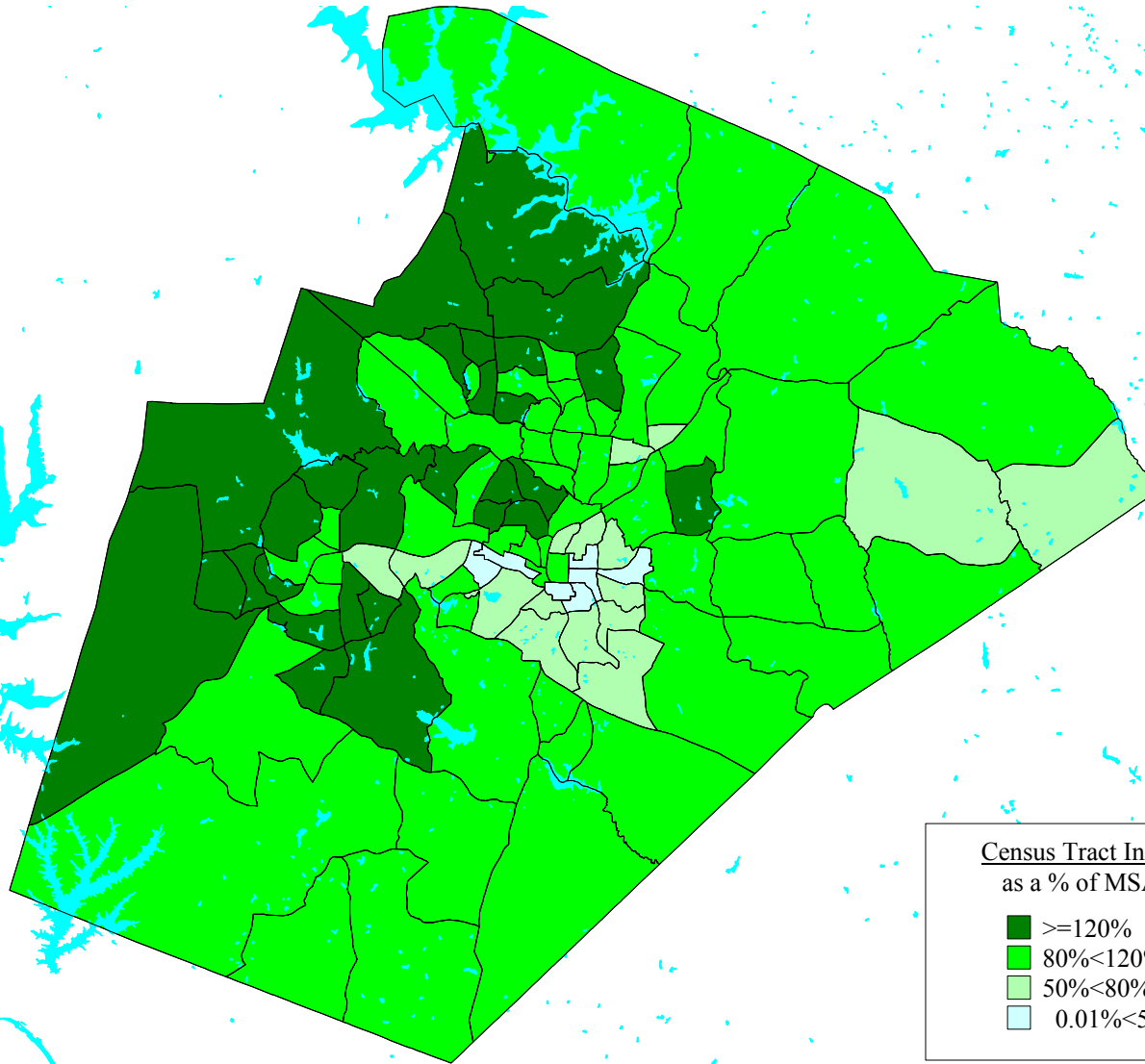


Wake County Assessment Area



Census Tract/Columnar Report - Demographic Data

Bank Data\Mortgage 2004\Gateway 2005

Area: Wake County 2005

Active Filters

STATE	STATENAME	MSA	MSANAME	COUNTY	COUNTYNAME	CENSUSTRAC	TOWNNAME	Income as % of MSA Median	Income Category
37	NC	39580	Raleigh-Cary, NC MSA	183	Wake	0501.00 (Mid)	Raleigh	89.52	Middle
37	NC	39580	Raleigh-Cary, NC MSA	183	Wake	0503.00 (Mid)	Raleigh	113.79	Middle
37	NC	39580	Raleigh-Cary, NC MSA	183	Wake	0504.00 (Mod)	Raleigh	66.73	Moderate
37	NC	39580	Raleigh-Cary, NC MSA	183	Wake	0505.00 (Mod)	Raleigh	61.50	Moderate
37	NC	39580	Raleigh-Cary, NC MSA	183	Wake	0506.00 (Low)	Raleigh	42.26	Low
37	NC	39580	Raleigh-Cary, NC MSA	183	Wake	0507.00 (Low)	Raleigh	42.57	Low
37	NC	39580	Raleigh-Cary, NC MSA	183	Wake	0508.00 (Low)	Raleigh	30.02	Low
37	NC	39580	Raleigh-Cary, NC MSA	183	Wake	0509.00 (Low)	Raleigh	25.04	Low
37	NC	39580	Raleigh-Cary, NC MSA	183	Wake	0510.00 (Mid)	Raleigh	84.20	Middle
37	NC	39580	Raleigh-Cary, NC MSA	183	Wake	0511.00 (Low)	Raleigh	43.82	Low

Census Tract/Columnar Report - Demographic Data

Bank Data\Mortgage 2004\Gateway 2005

Area: Wake County 2005

Active Filters

STATE	STATENAME	MSA	MSANAME	COUNTY	COUNTYNAME	CENSUSTRAC	TOWNNAME	Income as % of MSA Median	Income Category
37	NC	39580	Raleigh-Cary, NC MSA	183	Wake	0512.00 (Mid)	Raleigh	100.00	Middle
37	NC	39580	Raleigh-Cary, NC MSA	183	Wake	0514.00 (Mid)	Raleigh	104.08	Middle
37	NC	39580	Raleigh-Cary, NC MSA	183	Wake	0515.01 (Upr)	House Creek,Meredith,Rale	193.57	Upper
37	NC	39580	Raleigh-Cary, NC MSA	183	Wake	0515.02 (Upr)	Meredith,Raleigh	133.51	Upper
37	NC	39580	Raleigh-Cary, NC MSA	183	Wake	0516.00 (Upr)	Raleigh	188.03	Upper
37	NC	39580	Raleigh-Cary, NC MSA	183	Wake	0517.00 (Upr)	House Creek,Meredith,Rale	189.63	Upper
37	NC	39580	Raleigh-Cary, NC MSA	183	Wake	0518.00 (Mid)	Raleigh	90.28	Middle
37	NC	39580	Raleigh-Cary, NC MSA	183	Wake	0519.00 (Mod)	Raleigh	61.81	Moderate
37	NC	39580	Raleigh-Cary, NC MSA	183	Wake	0520.01 (Low)	Raleigh	48.05	Low
37	NC	39580	Raleigh-Cary, NC MSA	183	Wake	0520.02 (Mod)	Raleigh	61.26	Moderate

Census Tract/Columnar Report - Demographic Data

Bank Data\Mortgage 2004\Gateway 2005

Area: Wake County 2005

Active Filters

STATE	STATENAME	MSA	MSANAME	COUNTY	COUNTYNAME	CENSUSTRAC	TOWNNAME	Income as % of MSA Median	Income Category
37	NC	39580	Raleigh-Cary, NC MSA	183	Wake	0521.01 (Mod)	Raleigh,St. Marys	60.67	Moderate
37	NC	39580	Raleigh-Cary, NC MSA	183	Wake	0521.02 (Mod)	Raleigh,St. Marys	57.46	Moderate
37	NC	39580	Raleigh-Cary, NC MSA	183	Wake	0522.01 (Mod)	Raleigh	53.22	Moderate
37	NC	39580	Raleigh-Cary, NC MSA	183	Wake	0522.02 (Mod)	Raleigh,St. Marys,Swift C	57.92	Moderate
37	NC	39580	Raleigh-Cary, NC MSA	183	Wake	0523.01 (Mid)	Raleigh,Swift Creek	91.55	Middle
37	NC	39580	Raleigh-Cary, NC MSA	183	Wake	0523.02 (Mod)	Raleigh,Swift Creek	75.45	Moderate
37	NC	39580	Raleigh-Cary, NC MSA	183	Wake	0524.01 (Mid)	Cary,Meredith,Raleigh	94.27	Middle
37	NC	39580	Raleigh-Cary, NC MSA	183	Wake	0524.02 (Mod)	Meredith,Raleigh	73.85	Moderate
37	NC	39580	Raleigh-Cary, NC MSA	183	Wake	0524.04 (Mid)	Raleigh,Swift Creek	114.95	Middle
37	NC	39580	Raleigh-Cary, NC MSA	183	Wake	0524.05 (Low)	Raleigh	40.92	Low

Census Tract/Columnar Report - Demographic Data

Bank Data\Mortgage 2004\Gateway 2005

Area: Wake County 2005

Active Filters

STATE	STATENAME	MSA	MSANAME	COUNTY	COUNTYNAME	CENSUSTRAC	TOWNNAME	Income as % of MSA Median	Income Category
37	NC	39580	Raleigh-Cary, NC MSA	183	Wake	0525.01 (Mid)	House Creek,Meredit,Rale	113.00	Middle
37	NC	39580	Raleigh-Cary, NC MSA	183	Wake	0525.03 (Upr)	Cary,House Creek,Meredit	137.18	Upper
37	NC	39580	Raleigh-Cary, NC MSA	183	Wake	0525.04 (Mid)	House Creek,Meredit	99.75	Middle
37	NC	39580	Raleigh-Cary, NC MSA	183	Wake	0526.01 (Mid)	House Creek,Raleigh	116.55	Middle
37	NC	39580	Raleigh-Cary, NC MSA	183	Wake	0526.02 (Mid)	House Creek,Neuse,Raleigh	105.02	Middle
37	NC	39580	Raleigh-Cary, NC MSA	183	Wake	0526.03 (Mid)	Raleigh	117.02	Middle
37	NC	39580	Raleigh-Cary, NC MSA	183	Wake	0527.01 (Mid)	House Creek,Neuse,Raleigh	82.06	Middle
37	NC	39580	Raleigh-Cary, NC MSA	183	Wake	0527.03 (Mid)	Neuse,Raleigh,St. Matthew	85.28	Middle
37	NC	39580	Raleigh-Cary, NC MSA	183	Wake	0527.04 (Mod)	Neuse,St. Matthews	59.29	Moderate
37	NC	39580	Raleigh-Cary, NC MSA	183	Wake	0527.05 (Mid)	Neuse,Raleigh,St. Matthew	97.18	Middle

Census Tract/Columnar Report - Demographic Data

Bank Data\Mortgage 2004\Gateway 2005

Area: Wake County 2005

Active Filters

STATE	STATENAME	MSA	MSANAME	COUNTY	COUNTYNAME	CENSUSTRAC	TOWNNAME	Income as % of MSA Median	Income Category
37	NC	39580	Raleigh-Cary, NC MSA	183	Wake	0528.01 (Mid)	Panther Branch,St. Marys	111.83	Middle
37	NC	39580	Raleigh-Cary, NC MSA	183	Wake	0528.02 (Mid)	St. Marys,Swift Creek	88.42	Middle
37	NC	39580	Raleigh-Cary, NC MSA	183	Wake	0528.03 (Mod)	St. Marys	66.87	Moderate
37	NC	39580	Raleigh-Cary, NC MSA	183	Wake	0528.04 (Mid)	Raleigh,St. Marys,St. Mat	95.33	Middle
37	NC	39580	Raleigh-Cary, NC MSA	183	Wake	0528.05 (Mid)	Panther Branch,St. Marys	97.98	Middle
37	NC	39580	Raleigh-Cary, NC MSA	183	Wake	0529.00 (Mid)	Middle Creek,Panther Bran	101.87	Middle
37	NC	39580	Raleigh-Cary, NC MSA	183	Wake	0530.01 (Upr)	Cary,Swift Creek,White Oa	166.64	Upper
37	NC	39580	Raleigh-Cary, NC MSA	183	Wake	0530.02 (Mid)	Middle Creek,Panther Bran	96.55	Middle
37	NC	39580	Raleigh-Cary, NC MSA	183	Wake	0531.01 (Mid)	Middle Creek	84.99	Middle
37	NC	39580	Raleigh-Cary, NC MSA	183	Wake	0531.03 (Mid)	Middle Creek,Panther Bran	97.17	Middle

Census Tract/Columnar Report - Demographic Data

Bank Data\Mortgage 2004\Gateway 2005

Area: Wake County 2005

Active Filters

STATE	STATENAME	MSA	MSANAME	COUNTY	COUNTYNAME	CENSUSTRAC	TOWNNAME	Income as % of MSA Median	Income Category
37	NC	39580	Raleigh-Cary, NC MSA	183	Wake	0531.04 (Mid)	Middle Creek,Panther Bran	99.28	Middle
37	NC	39580	Raleigh-Cary, NC MSA	183	Wake	0532.00 (Mid)	Buckhorn,Holly Springs,Mi	117.57	Middle
37	NC	39580	Raleigh-Cary, NC MSA	183	Wake	0534.02 (Upr)	White Oak	148.72	Upper
37	NC	39580	Raleigh-Cary, NC MSA	183	Wake	0534.03 (Upr)	Buckhorn,Cary,White Oak	130.55	Upper
37	NC	39580	Raleigh-Cary, NC MSA	183	Wake	0534.04 (Mid)	Buckhorn,Cary,Holly Sprin	117.55	Middle
37	NC	39580	Raleigh-Cary, NC MSA	183	Wake	0534.05 (Upr)	Swift Creek,White Oak	170.55	Upper
37	NC	39580	Raleigh-Cary, NC MSA	183	Wake	0534.06 (Upr)	Cary	139.02	Upper
37	NC	39580	Raleigh-Cary, NC MSA	183	Wake	0534.07 (Upr)	Cary,White Oak	163.52	Upper
37	NC	39580	Raleigh-Cary, NC MSA	183	Wake	0535.01 (Mod)	Cary	74.35	Moderate
37	NC	39580	Raleigh-Cary, NC MSA	183	Wake	0535.05 (Upr)	Cary,Swift Creek	137.50	Upper

Census Tract/Columnar Report - Demographic Data

Bank Data\Mortgage 2004\Gateway 2005

Area: Wake County 2005

Active Filters

STATE	STATENAME	MSA	MSANAME	COUNTY	COUNTYNAME	CENSUSTRAC	TOWNNAME	Income as % of MSA Median	Income Category
37	NC	39580	Raleigh-Cary, NC MSA	183	Wake	0535.06 (Upr)	Cary	138.83	Upper
37	NC	39580	Raleigh-Cary, NC MSA	183	Wake	0535.07 (Mid)	Cary	97.54	Middle
37	NC	39580	Raleigh-Cary, NC MSA	183	Wake	0535.08 (Mid)	Cary	107.16	Middle
37	NC	39580	Raleigh-Cary, NC MSA	183	Wake	0535.09 (Upr)	Cary	200.46	Upper
37	NC	39580	Raleigh-Cary, NC MSA	183	Wake	0535.10 (Upr)	Cary,Meredith	121.91	Upper
37	NC	39580	Raleigh-Cary, NC MSA	183	Wake	0535.12 (Upr)	Cary,Cedar Fork	146.69	Upper
37	NC	39580	Raleigh-Cary, NC MSA	183	Wake	0535.13 (Mid)	Cary	100.03	Middle
37	NC	39580	Raleigh-Cary, NC MSA	183	Wake	0535.14 (Upr)	Cary,Cedar Fork	162.89	Upper
37	NC	39580	Raleigh-Cary, NC MSA	183	Wake	0535.15 (Mid)	Cary	117.65	Middle
37	NC	39580	Raleigh-Cary, NC MSA	183	Wake	0536.00 (Upr)	Cary,Cedar Fork,White Oak	163.90	Upper

Census Tract/Columnar Report - Demographic Data

Bank Data\Mortgage 2004\Gateway 2005

Area: Wake County 2005

Active Filters

STATE	STATENAME	MSA	MSANAME	COUNTY	COUNTYNAME	CENSUSTRAC	TOWNNAME	Income as % of MSA Median	Income Category
37	NC	39580	Raleigh- Cary, NC MSA	183	Wake	0537.03 (Upr)	Bartons Creek,Cedar Fork,	157.40	Upper
37	NC	39580	Raleigh- Cary, NC MSA	183	Wake	0537.06 (Upr)	House Creek	135.09	Upper
37	NC	39580	Raleigh- Cary, NC MSA	183	Wake	0537.07 (Mid)	House Creek	114.86	Middle
37	NC	39580	Raleigh- Cary, NC MSA	183	Wake	0537.09 (Mid)	House Creek,Leesville,Mer	107.25	Middle
37	NC	39580	Raleigh- Cary, NC MSA	183	Wake	0537.10 (Mid)	Cedar Fork,House Creek,Le	116.70	Middle
37	NC	39580	Raleigh- Cary, NC MSA	183	Wake	0537.11 (Upr)	Leesville	144.44	Upper
37	NC	39580	Raleigh- Cary, NC MSA	183	Wake	0537.12 (Upr)	House Creek,Leesville	154.23	Upper
37	NC	39580	Raleigh- Cary, NC MSA	183	Wake	0537.13 (Mid)	Leesville	104.60	Middle
37	NC	39580	Raleigh- Cary, NC MSA	183	Wake	0537.14 (Upr)	House Creek,Leesville	132.44	Upper
37	NC	39580	Raleigh- Cary, NC MSA	183	Wake	0537.15 (Upr)	House Creek	135.44	Upper

Census Tract/Columnar Report - Demographic Data

Bank Data\Mortgage 2004\Gateway 2005

Area: Wake County 2005

Active Filters

STATE	STATENAME	MSA	MSANAME	COUNTY	COUNTYNAME	CENSUSTRAC	TOWNNAME	Income as % of MSA Median	Income Category
37	NC	39580	Raleigh-Cary, NC MSA	183	Wake	0537.16 (Mid)	House Creek,Raleigh	98.38	Middle
37	NC	39580	Raleigh-Cary, NC MSA	183	Wake	0538.01 (Upr)	Bartons Creek,Leesville	182.00	Upper
37	NC	39580	Raleigh-Cary, NC MSA	183	Wake	0538.02 (Upr)	Bartons Creek,House Creek	200.63	Upper
37	NC	39580	Raleigh-Cary, NC MSA	183	Wake	0539.00 (Mid)	Bartons Creek,Carr,New Li	116.06	Middle
37	NC	39580	Raleigh-Cary, NC MSA	183	Wake	0540.01 (Mid)	House Creek,Neuse,Raleigh	99.26	Middle
37	NC	39580	Raleigh-Cary, NC MSA	183	Wake	0540.03 (Upr)	Bartons Creek,House Creek	150.15	Upper
37	NC	39580	Raleigh-Cary, NC MSA	183	Wake	0540.04 (Mid)	House Creek,Neuse	104.78	Middle
37	NC	39580	Raleigh-Cary, NC MSA	183	Wake	0540.06 (Mid)	House Creek	102.04	Middle
37	NC	39580	Raleigh-Cary, NC MSA	183	Wake	0540.07 (Mid)	Bartons Creek,House Creek	107.02	Middle
37	NC	39580	Raleigh-Cary, NC MSA	183	Wake	0540.08 (Mod)	Neuse,St. Matthews	68.33	Moderate

Census Tract/Columnar Report - Demographic Data

Bank Data\Mortgage 2004\Gateway 2005

Area: Wake County 2005

Active Filters

STATE	STATENAME	MSA	MSANAME	COUNTY	COUNTYNAME	CENSUSTRAC	TOWNNAME	Income as % of MSA Median	Income Category
37	NC	39580	Raleigh-Cary, NC MSA	183	Wake	0540.09 (Mid)	Bartons Creek,Neuse,Wake	105.61	Middle
37	NC	39580	Raleigh-Cary, NC MSA	183	Wake	0540.10 (Mid)	Bartons Creek,Neuse	111.90	Middle
37	NC	39580	Raleigh-Cary, NC MSA	183	Wake	0541.02 (Mid)	Marks Creek,St. Matthews,	99.14	Middle
37	NC	39580	Raleigh-Cary, NC MSA	183	Wake	0541.04 (Mid)	Neuse,St. Matthews	100.56	Middle
37	NC	39580	Raleigh-Cary, NC MSA	183	Wake	0541.05 (Upr)	Neuse,St. Matthews	123.73	Upper
37	NC	39580	Raleigh-Cary, NC MSA	183	Wake	0541.06 (Mid)	Raleigh,St. Matthews	98.23	Middle
37	NC	39580	Raleigh-Cary, NC MSA	183	Wake	0541.07 (Mid)	St. Matthews	96.26	Middle
37	NC	39580	Raleigh-Cary, NC MSA	183	Wake	0541.08 (Mid)	Marks Creek,St. Matthews	89.55	Middle
37	NC	39580	Raleigh-Cary, NC MSA	183	Wake	0541.09 (Mid)	Marks Creek,St. Matthews	97.41	Middle
37	NC	39580	Raleigh-Cary, NC MSA	183	Wake	0542.01 (Mid)	Bartons Creek,Neuse,New L	101.94	Middle

Census Tract/Columnar Report - Demographic Data

Bank Data\Mortgage 2004\Gateway 2005

Area: Wake County 2005

Active Filters

STATE	STATENAME	MSA	MSANAME	COUNTY	COUNTYNAME	CENSUSTRAC	TOWNNAME	Income as % of MSA Median	Income Category
37	NC	39580	Raleigh- Cary, NC MSA	183	Wake	0542.02 (Mid)	Little River,Neuse,Wake F	102.87	Middle
37	NC	39580	Raleigh- Cary, NC MSA	183	Wake	0543.01 (Mid)	Little River,Marks Creek,	86.50	Middle
37	NC	39580	Raleigh- Cary, NC MSA	183	Wake	0543.02 (Mod)	Little River	76.13	Moderate
37	NC	39580	Raleigh- Cary, NC MSA	183	Wake	0544.01 (Mod)	Little River,Marks Creek,	77.49	Moderate
37	NC	39580	Raleigh- Cary, NC MSA	183	Wake	0544.02 (Mid)	Marks Creek	90.57	Middle